

# Subsoiler/Ripper Points

## The History of the SCRIP Point

The last couple of years now we have been running our SCRIP point next to several different competitor's points. To date we have not found a subsoiler point that out wears the SCRIP! Another advantage of the SCRIP point is that, because of the design, actually reduces the wear on your shanks and pulls easier than other 7" winged points on the market. Now we can also offer you the SCRIP design in a 10" wide point.



In this picture, the point on the left (SCRIP) was run on the same machine as the one on the right. The one on the right is a point from John Deere. As you can see the JD point is almost worn out and the SCRIP point has several hundred acres of use left. This point was run the summer of 2004 in North Manchester, Indiana.



## Big Ox, Cat, and others

| ORDER NO. | DESCRIPTION                                       | STOCK | RETAIL  |
|-----------|---|-------|---------|
| WHP55     | Scarifier point, Cast chrome. Wiese number 41WOX. | 35238 | \$46.47 |

## Blue Jet Subtiller

| ORDER NO. | DESCRIPTION  | STOCK | RETAIL  |
|-----------|--|-------|---------|
| TF801300  | Blue Jet Spring point (narrow). Chrome cast point. | 57159 | \$69.00 |
| TF801400  | Blue Jet Fall point (3" wide). Chrome cast point.  | 52478 | \$99.00 |
| TF801600  | Blue Jet shin. Chrome cast material.               | 76665 | \$89.00 |

TF801400

## Brent CPC and Earthquake

| ORDER NO. | DESCRIPTION  | STOCK  | RETAIL   |
|-----------|--|--------|----------|
| SCRIP9    | Conservation Ripper point to fit CPC and Earthquake with 1-1/4" shank. 7" wings. | 521018 | \$135.00 |
| W41BCPC   | Ripper point to fit Unverferth Brent CPC. Replaces Wiese no. 41B251234CPC.       | 05426  | \$35.00  |

## Bush Hog

| ORDER NO. | DESCRIPTION   | STOCK | RETAIL  |
|-----------|---|-------|---------|
| W41BBH    | Booted subsoiler point. 2.5" wide x 9" long. Wiese part number 41B2509BH. | 16026 | \$29.44 |
| W41BBHC   | Booted point with 3" chrome cap welded to the tip.                        | 36237 | \$46.61 |

## Brillion

| ORDER NO.  | DESCRIPTION  | STOCK  | RETAIL   |
|------------|--|--------|----------|
| W41BBP     | Booted subsoiler point. 2.5" wide x 12", fits 1.25" wide shank. <i>Prior to Land Commander.</i> Wiese no. 41B2512B.                          | 63327  | \$33.37  |
| W41BBC     | Booted point with 3" chrome cap welded to the tip.   | 40335  | \$47.20  |
| W41BLC     | Booted subsoiler point. 2.5" wide x 12", fits 1.25" wide shank to fit Brillion Landcommander. Has slot for shank guard. Wiese no. 41B2512B2. | 76128  | \$30.95  |
| W41BLCC    | Booted subsoiler point to fit Brillion Landcommander. Has 3" chrome cap welded to the tip. Has slot for shank guard.                         | 78237  | \$46.96  |
| SCRIP2B    | Conservation ripper point with 7" wings to fit Brillion Land Commander 1 & 2.  | 524018 | \$139.00 |
| SCRIP2B-10 | Conservation ripper point with 10" wings to fit Brillion Land Commander 1 & 2.   | 084111 | \$164.00 |
| SCRIP6B    | Conservation rippert point 2.5" wide to fit Brillion Land Commander.   | 00789  | \$116.00 |
| SCRIP20    | Conservation ripper point, 2.5" wide to fit ST-30 strip-till machine, 3/4" shank. Disturbs less soil than the OEM point and wears longer.    | 00696  | \$128.00 |
| CF3K819    | Wear shin for Land Commander and Compaction Commander. Replaces Brillion no.'s 3K819 & 3K809. Made from a special allow for longer wear.     | 88556  | \$74.50  |
| CF6K797    | Wear shin, reversible, for Zone Commander with 1 1/4" straight leg shank. Replaces Brillion no. 6K797 & 6K888.                               | 65930  | \$52.75  |




CF3K819

CF6K797

## Case-IH (NOT CASE-DMI) #10, 11, 14 and others

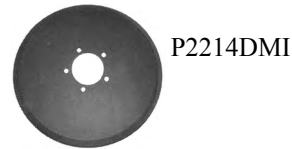
| ORDER NO. | DESCRIPTION   | STOCK | RETAIL  |
|-----------|---|-------|---------|
| W41BIHP   | Booted subsoiler point. 2.5" wide x 8" long. Wiese number 41B2508IH.                              | 10716 | \$24.30 |
| W41BIHC   | Booted point with 3" chrome cap welded to the tip.  | 02522 | \$36.00 |
| SSIHP     | Formed ear point for IH#10. 1/2" x 2" x 8". Wiese no. 7709545IH.                                  | 05211 | \$17.86 |
| WMW1100   | Formed ear point for IH #11. 3/4" x 2-1/2" x 12" Also fits M & W Earthmaster. Wiese no. 77MW1100. | 50129 | \$30.07 |

## DMI Subsoiler Points

| ORDER No.   | DESCRIPTION   | STOCK  | RETAIL   |
|---|---|--------|----------|
|  W41BDMI2114  | Point, 2" to fit 1 1/4" shank.  | 15447  | \$63.59  |
| W41BDMI2112   | Point, 2" to fit 1 1/2" shank.  | 31948  | \$70.19  |
|  W41BDMI7114  | Point, 7" to fit 1 1/4" shank.  | 02365  | \$90.29  |
| W41BDMI7112   | Point, 7" to fit 1 1/2" shank.  | 02768  | \$96.00  |
|  W41BDMI10112 | Point, 10" to fit 1 1/2" shank.   | 92879  | \$111.84 |
| SCRP2   | Conservation Ripper Point with 7" wings for Case-DMI Ecolo Tiger with 1-1/4" shank.         | 00398  | \$124.00 |
| SCRP2-10  | Conservation Ripper Point with 10" wings for Case-DMI Ecolo Tiger with 1-1/4" shank.        | 524013 | \$139.00 |
| SCRP6   | Conservation Ripper Point for Case-DMI Ecolo Tiger with 1-1/4" shank. No wings, 2.5" wide.  | 00488  | \$112.00 |
| SCRP3   | Conservation Ripper Point with 7" wings to fit Case-DMI Ecolo Tiger with the 1-1/2" shank.  | 57698  | \$129.00 |
| SCRP3-10  | Conservation Ripper Point with 10" wings to fit Case-DMI Ecolo Tiger with the 1-1/2" shank. | 056014 | \$142.00 |
| W42404  | Coverboard, 4", bolt spacing is 2-1/4". 3/8" thick.   | 7483   | \$12.10  |
| W42406  | Coverboard, 6", bolt spacing is 2-1/4". 6 mm thick.   | 34715  | \$24.90  |

## Repair Blades for DMI

| ORDER No.     | DESCRIPTION  | STOCK | RETAIL  |
|---------------|--|-------|---------|
| MF17177MLOL   | 17" Fluted/Rippled Coulter - Flat - .177 thick, fits 4 bolt pattern. | 28227 | \$32.60 |
| WP18118DMR    | 18" Rear covering disc. - 4 bolt.                                    | 48123 | \$31.20 |
| MF20177MLWROL | 20" Fluted/Rippled Coulter - Flat - .177 thick fits 4 bolt pattern.. | 55526 | \$36.50 |
| P20197DMI     | 20" Coulter, concave, 3/16" thick - 5 bolt.                          | 93135 | \$44.84 |
| P2214DMI      | 22" Coulter, concave, 1/4" thick - 5 bolt.                           | 76632 | \$52.39 |
| P20197MLOL    | 20" Coulter, flat, plain edge, .197 thick, fits 4 bolt pattern.      | 90928 | \$41.56 |
| P2214MLOL     | 22" Coulter, flat, plain edge, 1/4" thick, fits 4 bolt pattern.      | 46732 | \$53.77 |
| P2414MLOL     | 24" Coulter, flat, plain edge, 1/4" thick, 4 bolt.                   | 72345 | \$61.81 |



P2214DMI

## Shank Protector for DMI MRD Shank

| ORDER No.  | DESCRIPTION                                   | STOCK | RETAIL  |
|------------|---|-------|---------|
| TF09581760 | Replaces DMI-NH 09581760. Shin for MRD shank. | 56024 | \$29.50 |

## Great Plains

| ORDER No.     | DESCRIPTION   | STOCK | RETAIL  |
|---------------|---|-------|---------|
| W41BDMI2114GP | Point, 2 1/2" to fit GP subsoilers with 1 1/4" shank. | 19547 | \$65.59 |
| W41BDMI7114GP | Point, 7" to fit GP subsoilers with 1 1/4" shank.     | 00665 | \$94.29 |

## John Deere 510, 512, 900/900V, 2100, 2700 and Glencoe

| ORDER No. | DESCRIPTION  | STOCK  | RETAIL   |
|-----------|--|--------|----------|
| W41BJDP   | Booted subsoiler point. Overall length is 12". Width is 2.5". Wiese no. 41B2512JD.   | 73619  | \$23.39  |
| W41BJDC   | Booted point with 3" chrome cap welded to the tip.   | 70727  | \$38.67  |
| SCRP1     | Conservation Ripper Point with 7" wings to fit John Deere. Also fits Krause TL3000 disc ripper, Krause 4880 Land Builder, Baker and Laney rippers.   | 00788  | \$116.00 |
| SCRP8     | Conservation Ripper Point, 2.5" wide to fit John Deere. Also fits Krause TL3000 disc ripper, Krause 4880 Land Builder, Baker and Laney rippers.  | 00488  | \$112.00 |
| SCRP1-10  | Conservation Ripper Point with 10" wings to fit John Deere. Also fits Krause TL3000 disc ripper, Krause 4880 Land Builder, Baker and Laney rippers.  | 524013 | \$139.00 |
| TF261005  | Shin (shank protector) for JD rippers with straight shanks, replaces JD no. N261005. Made from Chrome/Nickel material for longer wear. Used on models 2100, 2700, 915V, 913, and 955 row crop ripper.                            | 39841  | \$69.90  |
| TF261140  | Shin (shank protector) for JD rippers with parabolic shanks, replaces JD no. N261140. Made from Chrome/Nickel material for longer wear. Used on models prior to s/n 1800; 512, 913, 915V, 2700.                                  | 39556  | \$79.90  |
| TF261138  | Shin (shank protector) for JD rippers with cushion trip standards, replaces JD no. N261138 and N262622. Made from Chrome/Nickel material for longer wear. Used on models after s/n 1800 with cushion trip; 512, 913, 915V, 2700. | 39266  | \$89.90  |

TF261140

## Krause



SCR2



| ORDER No. | DESCRIPTION   | STOCK | RETAIL   |
|-----------|---|-------|----------|
| SCR11     | 7" wide point to fit Krause TL3000 disc ripper, Krause 4880 Land Builder.           | 00784 | \$116.00 |
| SCR8      | 2.5" wide point to fit Krause TL3000 disc ripper, Krause 4880 Land Builder.         | 00488 | \$112.00 |
| SCR2      | 7" wide point to fit Krause Dominator.  | 00397 | \$124.00 |
| SCR6      | 2.5" wide point to fit Krause Dominator.  | 00489 | \$112.00 |
| TF4850410 | Wearbar assembly for Chisel shank on Dominator. Replaces Krause no. 4850-41-0A.     | 02648 | \$66.00  |
| TF4850136 | Wearbar assembly for Subsoiler shank on Dominator. Replaces Krause no. 4850-136-0A. | 02641 | \$66.00  |

**Note:** The TF4850410 and the TF4850136 look very similar but the curvature is slightly different.

## Landoll Weatherproofer



| ORDER No. | DESCRIPTION   | STOCK  | RETAIL   |
|-----------|---|--------|----------|
| SCR10     | Conservation ripper point for Landoll, 2-1/2" wide.   | 05193  | \$122.00 |
| SCR11     | Conservation ripper point for Landoll, 7" wide wing.  | 050014 | \$134.00 |
| SCR11-10  | Conservation ripper point for Landoll, 10" wide wing. | 571111 | \$149.00 |

SCR11-10 may require 4-5 week lead time.



SCR11

## Sunflower and M & W Earthmaster



| ORDER No.  | DESCRIPTION   | STOCK | RETAIL   |
|------------|---|-------|----------|
| W41BMW     | Booted subsoiler point. 2.5" wide x 12" long. Has slotted hole to fit Sunflower and M & W Earthmaster. Wiese no. 41B2512SFMW. | 17718 | \$25.30  |
| W41BMWC    | Booted point with 3" chrome cap welded to the tip.  | 89827 | \$41.40  |
| W41BMWFIN  | Booted point with chrome fin and cap 2.5" wide. Wiese no. 41B2512SFMWA.   | 59452 | \$78.50  |
| W41BMWCFIN | Booted point with chrome fin and cap, 7" wide wings. Wiese no. 41B2512SFMW7/41CAP.  | 04875 | \$112.00 |
| SCR4       | Conservation ripper point with 7" wings. Fits Sunflower and M & W Earthmaster.  | 00398 | \$124.00 |
| WMW1100    | Formed ear point for M & W Earthmaster.   | 67719 | \$25.37  |
| WMW1700    | Booted point for M & W Earthmaster with parabolic shank and wear guard. Has a full chrome cap. Wiese no. 41B2512MWF.          | 61846 | \$68.80  |
| TF6276     | Shin to fit Sunflower rippers. Replaces Sunflower no. SN6276.   | 97265 | \$89.70  |

## Tye Paratill



| ORDER No. | DESCRIPTION                          | STOCK | RETAIL  |
|-----------|--------------------------------------|-------|---------|
| TF123     | Point for Tye Paratill, chrome cast. | 01038 | \$43.00 |

## Unverferth/Rawson Zone Builder

| ORDER NO. | DESCRIPTION   | STOCK  | RETAIL   |
|-----------|---|--------|----------|
| SCRP18    | Conservation Ripper point to fit Unverferth Strip till machine. 2.5" wide for 3/4" shank.   | 52986  | \$119.00 |
| H619110CC | Booted point with full chrome cap. Replaces Unverferth no. 64539.   | 04925  | \$42.00  |
| H61910NS  | New style crowned point for Unverferth Zone builders. Replaces Unverferth no. 64321B & 65622B.  | 03025  | \$29.00  |
| SCRP9R    | Conservation Ripper point to fit the Zone Builder, 2-1/2 wide with crown on top of the point.   | 05196  | \$122.00 |
| SCRP9RW   | Conservation Ripper point to fit the Zone Builder. 7" wings with crown on top of the point.   | 050011 | \$134.00 |
| TF62705-B | Shin, replaces Unverferth mild steel shin. Made of a special alloy for extended wear.   | 08321  | \$34.00  |
| TF65947B  | Wear bar, 12" for Unverferth parabolic shanks. 4 mounting holes. Replaces Unverferth number 65947B.   | 03318  | \$19.00  |
| TF63559B  | Wear bar, 12" for Unverferth parabolic shanks. 5 mounting holes. Replaces Unverferth number 63559B.   | 03318  | \$19.00  |
| W41BCPC   | Ripper point to fit Unverferth Brent CPC. Replaces Wiese no. 41B251234CPC.  | 05426  | \$35.00  |
| TF64080   | Side plates for Zone Builder, we add hardface to the wear portion of the side plates, price includes bolts. Includes one RH and one LH plate. | 03145  | \$59.00  |



SCR9R



TF64080



TF65947B



TF62705-B

## Wilrich

| ORDER NO. | DESCRIPTION   | STOCK | RETAIL   |
|-----------|---|-------|----------|
| SCR26     | Conservation ripper point to fit Wilrich 1 1/4" shank. No wings.                      | 03386 | \$119.00 |
| SCR26-10  | Conservation ripper point to fit Wilrich 1 1/4" shank. Has 10" wings (cutting width). | 04997 | \$142.00 |



## Yetter

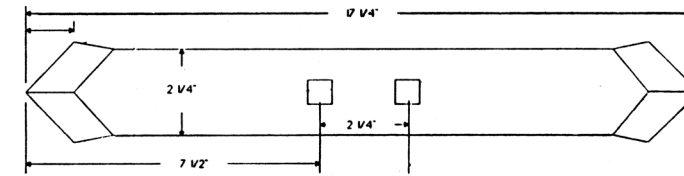
| ORDER NO. | DESCRIPTION   | STOCK | RETAIL  |
|-----------|---|-------|---------|
| W41YP     | Booted subsoiler point for Yetter. 2" wide, 13" long. Wiese no. 41B2013Y. Replaces Yetter no. 1000-212. | 57223 | \$32.50 |



## Bolt-on & Crimp-on Ripper Points

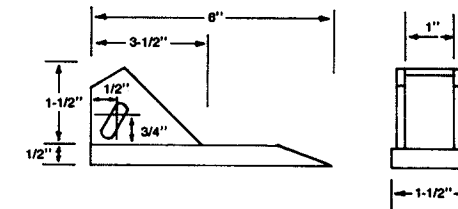
### Brillion / Landoll / Tebbin Bolt-On

| ORDER NO. | DESCRIPTION   | STOCK | RETAIL  |
|-----------|---|-------|---------|
| W481004   | Bolt-on point, plain. Uses 5/8" plow bolts. Overall length is 17 1/4". Replaces Wiese no. 48010014. | 87717 | \$25.40 |



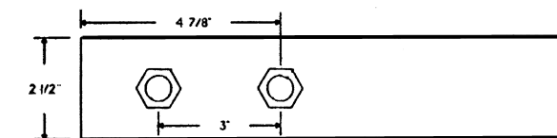
### Hamby, Howard, Johnson, and others

| ORDER NO. | DESCRIPTION   | STOCK | RETAIL  |
|-----------|---|-------|---------|
| WILOC     | Crimp on point. Wiese no. 41WILOC. This point has a chrome cap welded to the tip. | 94417 | \$20.70 |



### Deere / Kelley Bolt-On

| ORDER NO. | DESCRIPTION   | STOCK | RETAIL  |
|-----------|---|-------|---------|
| WSS2512   | Bolt on point, plain. Uses 5/8" hex head bolts. Overall length is 12". Replaces Wiese no. 412512JD. | 91519 | \$21.70 |



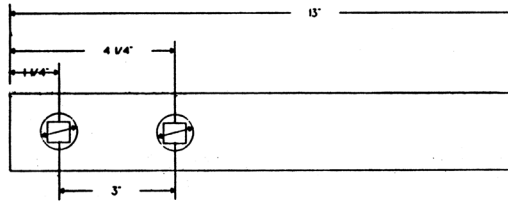
### Universal Shank Protector for Subsoilers

| ORDER NO. | DESCRIPTION                                      | STOCK | RETAIL  |
|-----------|--|-------|---------|
| W761714   | Chrome Shank Saver, 1-5/8" x 14", weld-on. Flat. | 03214 | \$17.57 |

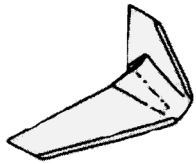


## Deere / Landoll / Case Bolt-On

| ORDER NO. | DESCRIPTION  | STOCK | RETAIL  |
|-----------|--|-------|---------|
| WSS2013   | Bolt-on point, plain. Uses 1/2" plow bolts. Overall length is 13".<br>Replaces Wiese no. 412013JD. | 97318 | \$19.70 |



## Subsoiler Repair Parts and Options



| ORDER NO. | DESCRIPTION  | STOCK | RETAIL  |
|-----------|--|-------|---------|
| CFWING    | Lift wings for subsoiler points. Overall width is 9". 1/2" thick with hardface on the wings. | 02322 | \$29.00 |
| CFFIN     | Shark fin applied to any subsoiler.  | 00124 | \$30.00 |
| CFCHS     | Hardface applied to any subsoiler point.   | 7965  | \$9.95  |
| CC2214    | Chrome cap only for subsoilers. Does not include application.                                | 3985  | \$12.75 |

## Roll Pins / Hardware for Subsoilers



| MAKE                          | ORDER NO. | DESCRIPTION                          | STOCK | RETAIL |
|-------------------------------|-----------|--------------------------------------|-------|--------|
| <i>Brillion</i>               | M14134    | Pkg of 10 1/4" x 1-3/4" roll pins.   | 0034  | \$6.00 |
| <i>Brillion LC / Bush Hog</i> | M122      | Pkg of 10 1/2" x 2" roll pins.       | 0543  | \$9.00 |
| <i>Case-IH</i>                | M7162     | Pkg of 10 7/16" x 2" roll pins.      | 0642  | \$8.60 |
| <i>Deere / Glencoe</i>        | M382      | Pkg of 10 3/8" x 2" roll pins.       | 0041  | \$8.00 |
| <i>Sunflower / M &amp; W</i>  | MWPIN     | <b>Sold Each</b> splined pins. 1/2". | 0120  | \$3.00 |