

Danish Tine Shanks ("S" Shanks)



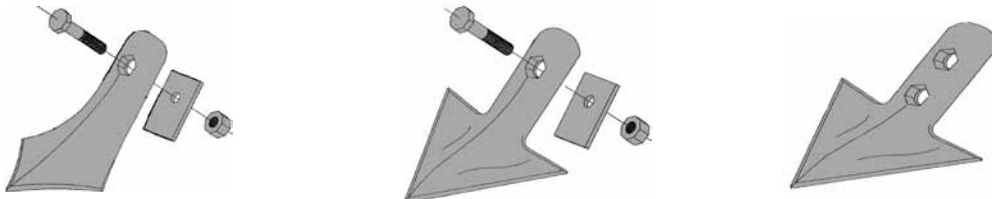
Imported from Germany, we have had very good success with these shanks. Ground clearance is measure from the mounting hole to the sweep bolt hole.

ORDER NO.	DESCRIPTION	STOCK	RETAIL
WST470	Short Rau Tine with point. Ground clearance is 9", 1" wide, overall height 12", 5/16" thick.	5787	\$12.50
WST3210	Standard "S" Tine, punched to accept 3/8" shovel bolt. 1-1/4" wide, 3/8" thick, 14-1/4" ground clearance.	40217	\$17.20
WST3212	Heavy duty, same "S" tine as WST3210 except it is 1/2" thick. 32mm x 12mm.	70318	\$18.67
WST3212HC	High Clearance "S" tine. Punched to accept a 3/8" shovel bolt. 1-3/4" wide, 1/2" thick, 19-3/4" ground clearance.	42226	\$31.77
WSP41	Medium clearance "S" Tine used on Case, Farmhand, White, and Kewanee. Punched for 3/8" shovel bolt. 1-1/4" wide, 7/16" thick, 17-1/4" ground clearance.	03726	\$39.00
WSTJD3212	"S" tine to fit JD 940 & 960 with danish style shanks. Replaces JD no. N185521.	19315	\$19.87
WSTJD980	"S" tine to fit JD 980 cultivators with danish shanks. Replaces JD no. N231489.	13020	\$29.01
ST485	Reversible point for WST470 "S" tine.	4324	\$3.34

Tool Bar Brackets for Danish Tines

ORDER NO.	DESCRIPTION	STOCK	RETAIL
BL2T	2" Tool Bar clamp/bracket.	0827	\$4.00
C212	2-1/2" Tool Bar clamp/bracket.	0826	\$4.00
C3T	3" Tool Bar clamp/bracket. - for use with all tines.	0245	\$6.00









Danish Sweeps Made From Chromium Carbide



ORDER NO.	DESCRIPTION	STOCK	RETAIL
TF860202	2.5" wide sweep, includes hardware.	0968	\$9.85
TF860402	4" wide sweep, includes hardware.	4876	\$11.20
TF861402	4" wide sweep, 2 bolt holes to fit Kongskilde. Does NOT include hardware.	33715	\$24.75

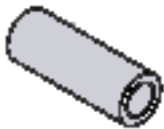
** All Chromium Carbide danish sweeps will be discontinued when current inventory is depleted.

Field Cultivator/Soil Finisher Shanks

PICTURE	ORDER NO.	OEM NUMBER	DESCRIPTION	STOCK	RETAIL
	BRS5134B	576800	Fits AC field cultivators.	62712	\$24.66
	BRS5217B	813293C1	Fits IH field cultivators, and MF 259 field cultivators.	40125	\$30.06
	BRS5223B	63355	Fits Glencoe field cultivators.	16025	\$29.44
	BRS5215B	67416	Fits Glencoe field and row crop cultivators.	46511	\$22.34
	BRS5222B	11511	Fits Wilrich field cultivator.	84718	\$25.49
	WSTJD3212	N185521	"S" tine to fit JD 960 with danish style shanks.	19315	\$19.87
	WSTJD980	N231489	"S" tine for JD980 field cultivator.	13020	\$29.01
	HSP55EO		Low draft Field Cultivator shank.	71433	\$48.81
	CF212		Tool Bar Bracket, 2 1/2".	0242	\$6.00
	CF33		Tool Bar Bracket, 3".	0651	\$8.00

Pivot Bushings for JD Shanks

Hardened bushings for various applications. Commonly used on Field Cultivator shanks.



ORDER NO.	DESCRIPTION	STOCK	RETAIL
CN231874 .854" O.D. x .51" I.D. x 2.07" long.	Pivot Bushing, replaces JD no. N231874. Used on 980 up to s/n 5159, 985 up to s/n 443. 726 mulch finisher up to s/n 699, 730 air drill up to s/n 490.	5540	\$6.50
CN234484 .988" O.D. x .64" I.D. x 2.03" long.	Late Model Pivot Bushing, replaces JD no. N234484. Used on 980 after s/n 5159, 985 after s/n 443, 726 mulch finisher after s/n 699, 730 air drill after s/n 490, 550 Mulch Master, 856 row crop cultivator, 2700 Mulch Ripper up to s/n 1799, 2200 & 2210 field cultivator.	4056	\$7.20