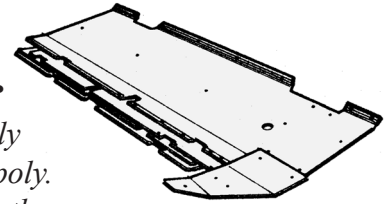


John Deere Poly Skid Plate Covers Kits

* **Hardware included in each kit.**

* **All kits are made from 1/4" thick virgin UHMW.**

CFC Distributors, Inc. has, and always will, offer "Slippery Shoes" made of only virgin UHMW Polymer. All John Deere skid plates are made of Yellow UHMW poly. Kit includes endshoes, gearbox cover, hardware and 900 series kits also include the stabilizer cover. Each piece is predrilled and bent to match the steel plates.



200 Series Kits

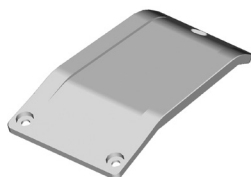
ORDER NO.	DESCRIPTION	WT.	STOCK	RETAIL
KCS13JD	Poly combine skid plate kit, 13' Deere, 200 series.	24	082526	\$316.00
KCS15JD	Poly combine skid plate kit, 15' Deere, 200 series.	27	063721	\$342.00
KCS16JD	Poly combine skid plate kit, 16' Deere, 200 series.	27	021928	\$364.00
KCS18JD	Poly combine skid plate kit, 18' Deere, 200 series.	33	069235	\$412.00
KCS20JD	Poly combine skid plate kit, 20' Deere, 200 series.	36	088431	\$436.00
KCS22JD	Poly combine skid plate kit, 22' Deere, 200 series.	40	004045	\$505.00
KCS24JD	Poly combine skid plate kit, 24' Deere, 200 series.	43	088246	\$536.00

900 Series Kits

ORDER NO.	DESCRIPTION	WT.	STOCK	RETAIL
KCS13JD9	Poly combine skid plate kit, 13' Deere, 900 series.	27	088626	\$336.00
KCS15JD9	Poly combine skid plate kit, 15' Deere, 900 series.	30	002921	\$365.00
KCS18JD9	Poly combine skid plate kit, 18' Deere, 900 series.	36	008431	\$435.00
KCS20JD9	Poly combine skid plate kit, 20' Deere, 900 series.	39	000839	\$475.00
KCS22JD9	Poly combine skid plate kit, 22' Deere, 900 series.	43	002341	\$540.00
KCS24JD9	Poly combine skid plate kit, 24' Deere, 900 series.	46	000449	\$550.00
KCS25JD9	Poly combine skid plate kit, 25' Deere, 900 series.	49	025746	\$594.00
KCS30JD9	Poly combine skid plate kit, 30' Deere, 900 series.	48	008254	\$660.00

600 Series Kits

ORDER NO.	DESCRIPTION	WT.	STOCK	RETAIL
KCS20JD6	Poly combine skid plate kit, 20' Deere, 600 series.		086531	\$446.00
KCS25JD6	Poly combine skid plate kit, 25' Deere, 600 series.		063931	\$492.00
KCS30JD6	Poly combine skid plate kit, 30' Deere, 600 series.		042648	\$578.00
KCS35JD6	Poly combine skid plate kit, 35' Deere, 600 series.		002359	\$665.00



Our 600 series skid shoes have a raised rib on both edges for extra long wear. In this raised area the shoe is 1/2" thick. The rest of the skid shoe is 3/8" thick. This is a very high density UHMW poly for extra wear.

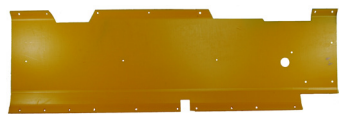


CH170502

CH205344 600 series skid shoe
Fax 800-528-2554

Repair Parts for Deere 200, 900, & 600 series Poly Skid Plates

ORDER NO.	DESCRIPTION	STOCK	RETAIL
CSXJD1	JD1 Left side, next to gear box, 46" x 16".	36859	\$83.76
CSXJD19	JD1 for 900 series. Left side.	69864	\$98.51
CSXJD2	JD2 Center Plate, 17" x 16".	13525	\$36.16
CSXJD3	JD3 Center Plate, 20" x 16".	02521	\$36.00
CSXJD4	JD4 Center Plate, 8" x 16".	07015	\$15.29
CSXJD5	JD5 Right Side Plate, next to end shoe, 46" x 16".	36854	\$83.76
CSXJD59	JD5 for 900 series. Right side plate.	69861	\$98.52
CSXJD6	JD6 Right Side End Shoe Cover, 25-1/4" x 3-1/2".	0198	\$13.00
CSXJD69	JD6 for 900 series. Right side, in front of JD59.	0197	\$13.00
CSXJD7	JD7 Gear box cover, specify 200 or 900 series.	08917	\$28.29
CSXJD79	JD7 for 900 series. Left side, in front of JD19.	08912	\$28.29
CSXJD23	JD23 Stabilizer cover, behind gear box - 24" x 17".	30335	\$47.18
CH208626	600 series, 8.25" x 11.5". Replaces JD no. H208626	2399	\$13.32
CH209696	600 series, 3" x 14.25". Replaces JD no. H209696	0861	\$9.71
CH170501	600 series, 9.5" x 14.5". Replaces JD no. H170501	05315	\$19.29
CH170502	600 series, 12" x 33". Replaces JD no. H170502	34055	\$72.04
CH205344	Main skid shoe on 600 series, 5.5" x 9.5". Replaces JD no. H205344	7279	\$10.38



CSXJD19



CSXJD3



CSXJD79



CSXJD69



CSXJD4



CSXJD59



CSXJD23



CH209696



CH209626

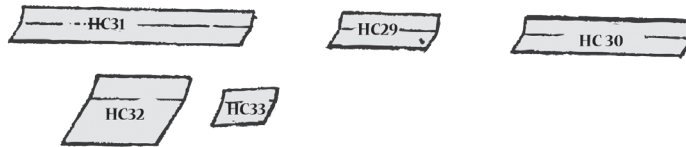
Hart Carter Gen III Poly Skid Plate Covers Kits

Produced from 1/4" thick virgin white UHMW poly, pre-formed and undrilled.
Kits include a drill bit and hammer rivets.

ORDER NO.	DESCRIPTION	STOCK	RETAIL
KCS13HC	Slippery shoe kit, 13".	061215	\$152.00
KCS15HC	Slippery shoe kit, 15".	021516	\$189.00
KCS20HC	Slippery shoe kit, 20".	025711	\$219.00

Repair Parts for Hart Carter Gen III Floating Heads

ORDER NO.	DESCRIPTION	STOCK	RETAIL
CSXHC29	Repair part, 18" x 7".	33115	\$16.18
CSXHC30	Repair part, 33 3/4" x 7".	15226	\$32.15
CSXHC31	Repair part, 44 1/2" x 7".	12035	\$43.15
CSXHC32	Repair part, 18" x 15". (Gen 2)	59221	\$32.79
CSXHC33	Repair part, 8" x 12". (Gen 2)	9288	\$11.84

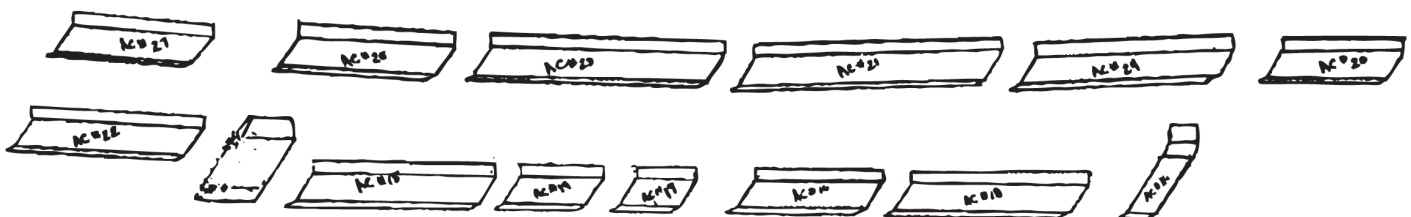


Agco-Gleaner 300/500/800 & Challenger Poly Skid Plate Kits

Produced from 1/4" thick virgin, white UHMW poly, pre-bent. All kits include gear box cover and right hand end shoe. Hammer rivets are included in the kit price.

ORDER NO.	DESCRIPTION	STOCK	RETAIL
KCS13AC	Slippery shoe kit for 13' flex head.	084236	\$406.00
KCS15AC	Slippery shoe kit for 15' flex head.	021535	\$439.00
KCS15AC5	Slippery shoe kit for 15' 500 series heads.	080836	\$476.00
KCS16AC	Slippery shoe kit for 16' flex head.	042834	\$478.00
KCS18AC	Slippery shoe kit for 18' flex head.	027831	\$484.00
KCS18AC5	Slippery shoe kit for 18' 500 series heads.	023245	\$529.00
KCS20AC	Slippery shoe kit for 20' flex head.	023245	\$529.00
KCS20AC5	Slippery shoe kit for 20' 500 & 800 series heads.	029544	\$574.00
KCS22AC	Slippery shoe kit for 22' flex head.	029547	\$574.00
KCS22AC5	Slippery shoe kit for 22' 500 & 800 series heads.	088056	\$636.00
KCS24AC	Slippery shoe kit for 24' flex head.	086154	\$646.00
KCS25AC	Slippery shoe kit for 25' flex head. 500 or 800 series.	000451	\$675.00
KCS26AC	Slippery shoe kit for 26' flex head. 300 series.	023451	\$679.00
KCS30AC	Slippery shoe kit for 30' flex head. 500 or 800 series.	027859	\$734.00

When ordering Gleaner skid plate kits or parts always specify if it is for 300, 500, or 800 series.



Repair Parts for Agco 300/500/800 Series Heads

ORDER NO.	DESCRIPTION	STOCK	RETAIL
CSXAC15	Repair part, 37 1/8" x 14".	61648	\$65.94
CSXAC16	Repair part, 29 1/2" x 14".	56635	\$52.35
CSXAC17	Repair part, 11 1/2" x 14".	33415	\$20.47
CSXAC18	Repair part, 36 3/4" x 14".	24546	\$64.88
CSXAC19	Repair part, 17 1/2" x 14".	38125	\$31.18
CSXAC20	Repair part, 23 5/8" x 14".	14826	\$40.59
CSXAC21	Repair part, 48 3/4" x 14".	35064	\$86.47
CSXAC22L	Repair part, 35 1/2" x 14".	91445	\$63.13
CSXAC22R	Repair part, 35 1/2" x 14".	91441	\$63.13
CSXAC23	Repair part, 48 1/4" x 14".	77951	\$85.39
CSXAC24	Repair part, 40" x 14"	46948	\$70.91
CSXAC25	Repair part, 38 5/8" x 14" specify Left or Right.	77748	\$68.24
CSXAC26	Repair part, 5 1/2" x 24 3/8". End shoe on 300 series only.	30918	\$27.18
CSXAC27	Repair part, 26 5/8" x 14".	01045	\$57.29
CSXAC28	Repair part, 9 3/4" x 8 1/2".	7177	\$10.24
CSXAC29	Repair part, gear box cover.	49231	\$47.06
CSXAC30	Repair part, 50" x 14" (used on 300 series 26').	84055	\$72.12
CSXAC32	Repair part, 46" x 14".	58744	\$68.35
CSXAC33	Repair part, 55 3/8" x 14".	19259	\$75.59
CSXAC34	Repair part, 45 7/8" x 14".	48156	\$74.06
CSXAC35	Repair part, 24 3/8" x 3 1/2". End shoe on 500 or 800 series.	6188	\$11.65
CSXAC36L	Repair part, 38 5/8" x 14" used on 500 and 800 series only.	54336	\$47.78
CSXAC36R	Repair part, 38 5/8" x 14" used on 500 and 800 series only.	54335	\$47.78

When ordering Gleaner skid plate kits or parts always specify if it is for 300, 500, or 800 series.

Love & Hiniker Poly Skid Plate Repair Parts

ORDER NO.	DESCRIPTION	STOCK	RETAIL
CSXHN10	Repair part for Hiniker, 17" x 16".	02235	\$46.00
CSXLV12	Repair part for Love, 14" x 12".	09521	\$37.00
CSXLV17	Repair part for Love, 14" x 17".	05135	\$45.00
CSXLV18	Repair part for Love, 18" x 18".	64835	\$54.94

ORDERING INFORMATION: *We generally can make custom skid plates for most applications. During most of the year we can custom cut your poly within 24 to 48 hours.*

New Holland Flex Poly Skid Plate Covers Kits

Produced from 1/4" thick virgin white UHMW poly, 973 kits are pre-bent, pre-drilled, and countersunk to match newer pre-drilled skid plate design. 973 kits include front and rear dividers. Installs with hammer rivets.

ORDER NO.	DESCRIPTION	STOCK	RETAIL
KCS15NHF	Slippery shoe kit, 15' for 972 flex head.	027833	\$411.25
KCS20NHF	Slippery shoe kit, 20' for 972 flex head.	025948	\$523.75
KCS16NH973	Slippery shoe kit, 16' for 972/973, 73C flex head.	029933	\$423.75
KCS18NH973	Slippery shoe kit, 18' for 973, 73C flex head.	021744	\$498.75
KCS20NH973	Slippery shoe kit, 20' for 973, 73C flex head.	008256	\$561.25
KCS22NH973	Slippery shoe kit, 22' for 973, 73C flex head.	021558	\$586.25
KCS24973	Slippery shoe kit, 24' for 973, 73C flex head.	065858	\$622.50
KCS25NH973	Slippery shoe kit, 25' for 973, 73C flex head.	027855	\$623.75
KCS30NH973	Slippery shoe kit, 30' for 973, 73C flex head.	025366	\$673.75

Repair Parts for Ford New Holland 972-973 Flex Heads

ORDER NO.	DESCRIPTION	STOCK	RETAIL
CSXNH24	Repair part, 972 center section, 29" x 24".	67855	\$83.94
CSXNH25	Repair part, 972 left section, 27" x 24".	68355	\$76.94
CSXNH26	Repair part, 972 right section, 27" x 24".	68357	\$76.94
CSXNH30	Repair part for 973, 23" x 24". (Old no. 27)	69844	\$69.94
CSXNH31	Repair part for 973, 29" x 24". (Old no. 28)	68359	\$76.94
CSXNH29	Repair part for 973, 35" x 24".	68351	\$76.94
CSXNH22	Repair part for 972 or 973, gear box cover, 13 1/2" x 7".	55115	\$16.50
CSXNH34	Repair part for 973, divider cover, long section.	08614	\$24.00
CSXNH35	Repair part for 973, divider cover, short section.	8899	\$14.12

Case New Holland 2020 / New Holland 973, 73C

Made from 1/4" thick, white virgin UHMW, prebent and predrilled. Hammer rivets included with kits. Case 2020 is prior to s/n CBJ020000.

ORDER NO.	DESCRIPTION	STOCK	RETAIL
KCS16NH973	Slippery shoe kit, 16' flex head.	029933	\$423.75
KCS18NH973	Slippery shoe kit, 18' flex head.	021744	\$498.75
KCS20NH973	Slippery shoe kit, 20' flex head.	008256	\$561.25
KCS22NH973	Slippery shoe kit, 22' flex head.	021558	\$586.25
KCS24973	Slippery shoe kit, 24' flex head.	065858	\$622.50
KCS25NH973	Slippery shoe kit, 25' flex head.	027855	\$623.75
KCS30NH973	Slippery shoe kit, 30' flex head.	025366	\$673.75

Case-IH 1020 Poly Skid Plate Covers Kits

ORDER NO.	DESCRIPTION	STOCK	RETAIL
KCS15IHNA	Slippery shoe kit for Case-IH 1020, 15', 32 pcs.	008236	\$410.00
KCS175IHNA	Slippery shoe kit for Case-IH 1020, 17.5', 37 pcs.	021535	\$439.00
KCS20IHNA	Slippery shoe kit for Case-IH 1020, 20', 42 pcs.	027838	\$484.00
KCS225IHNA	Slippery shoe kit for Case-IH 1020, 22.5', 47 pcs.	042245	\$528.00
KCS25IHNA	Slippery shoe kit for Case-IH 1020, 25', 53 pcs.	021744	\$589.00
KCS30IHNA	Slippery shoe kit for Case-IH 1020, 30', 63 pcs.	008255	\$660.00



CSXIH17A



CSXIH26



New design, 3/8" thick, has raised alignment blocks for immediate proper placement on the metal pads. Made of an extreme high density UHMW for longer wear. Saves time and money!

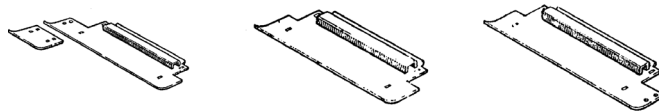
Repair Parts for Case-IH 820 & 1020

ORDER NO.	DESCRIPTION	STOCK	RETAIL
CSXIH8	Repair part for IH 820, 32" x 18".	79844	\$69.96
CSXIH9	Repair part for IH 820, 5 3/4" x 14".	4965	\$9.92
CSXIH10	Repair part for IH 820, 12" x 15".	76615	\$23.82
CSXIH11	Repair part for IH 820, 22" x 18".	57633	\$52.50
CSXIH12	Repair part for IH 820, 50" x 18".	71574	\$107.39
CSXIH13	Repair part for IH 820, 56" x 18".	72488	\$120.38
CSXIH15	Repair part for IH 820, 43" x 18".	57466	\$92.50
CSXIH16	Repair part for IH 820, 37" x 18".	85556	\$79.40
CSXIH18	Repair part for IH 820, 29" x 18".	64444	\$63.52
CSXIH17A	Repair part for Case-IH 1020, main skid plate. IH #892815.	8788	\$12.54
CSXIH1820	Repair part for Case-IH 1020, 18" x 20", stabilizer. #892817.	75051	\$72.24
CSXIH20	Repair part for Case-IH 1020, 6" x 20", optional bean row.	27619	\$23.88
CSXIH26	Case-IH 1020, 7 7/8" x 8 1/2" (replaces #22 & #21).	16215	\$18.02
CSXIH23	Case-IH 1020, Old style rear gear box cover. 9 1/2" x 5 1/2".	62011	\$14.66
CSXIH24	Case-IH 1020, Old style front gear box cover. 9" x 4".	62011	\$14.66
CSXIH27	Repair part for Case-IH 1020, Gear box cover, newer style.	74114	\$16.39
CSXIH29	Repair part for Case-IH 1020, LH end shoe. IH #892818.	4578	\$10.78
CSXIH30	Repair part for Case-IH 1020, RH end shoe, Pre - 1995.	0387	\$11.86
CSXIH31	Repair part for Case-IH 1020, RH end shoe, 1995 & later.	93115	\$16.27

MF Rotary Flex and White 900 Poly Skid Kits

Produced from 1/4" thick virgin white UHMW poly, pre-bent to match steel skid plate - undrilled.
All kits include rivets and drill bit. *We do not make the end shoes for these kits.*

ORDER NO.	DESCRIPTION	STOCK	RETAIL
KCS18MF	Slippery shoe kit, 18'.	008835	\$485.00
KCS20MF	Slippery shoe kit, 20'.	002934	\$490.00
KCS22MF	Slippery shoe kit, 22'.	084045	\$506.00
KCS25MF	Slippery shoe kit, 25'.	029147	\$524.00
KCS30MF	Slippery shoe kit, 30'.	025345	\$544.00



Case-IH 820 Poly Skid Plate Covers Kits

Produced from 1/4" thick virgin white UHMW poly, pre-bent and formed to match 1987 and newer skid plate "bend" design. Pre-drilled rear holes. Installs with hammer rivets.

ORDER NO.	DESCRIPTION	STOCK	RETAIL
KCS13IH	Slippery shoe kit for IH 820, 13' flex head.	080035	\$376.00
KCS15IH	Slippery shoe kit for IH 820, 15' flex head.	000435	\$425.00
KCS165IH	Slippery shoe kit for IH 820, 16.5' flex head.	021538	\$439.00
KCS175IH	Slippery shoe kit for IH 820, 17.5' flex head.	027638	\$459.00
KCS20IH	Slippery shoe kit for IH 820, 20' flex head.	021938	\$489.00
KCS225IH	Slippery shoe kit for IH 820, 22.5' flex head.	029344	\$549.00

Case New Holland 2062, MacDon 974, NH 84C

Made from 3/8" thick, white virgin UHMW, prebent and predrilled. Pop rivets are included with kits.

ORDER NO.	DESCRIPTION	STOCK	RETAIL
KCS30CNH2062	30' Slippery shoe kit.	027278	\$909.00
KCS36CNH2062	36' Slippery shoe kit.	023879	\$979.00

Repair Parts for Case New Holland 2062, MacDon 974, NH84C

ORDER NO.	DESCRIPTION	STOCK	RETAIL
CSX22155	Repair part, 11 3/4" x 15". (41566)	08321	\$34.00
CSX22148	Repair part, 17 1/4" x 23", triangle shaped. (41567)	04058	\$72.00
CSX22151	Repair part, 7 1/4" x 8 7/8". (41568)	46718	\$25.20
CSX22154	Repair part, 3" x 18". (41569)	02526	\$36.00
CSX22150	Repair part, 5 7/8" x 8 7/8". (41570)	08619	\$24.00



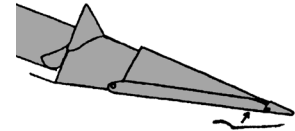
Cornhead Snout Shoes

Skid plates to mount under the front of cornhead snouts. Prevents the cornhead from digging or gouging. Produced from 1/4" thick white UHMW poly. Price does not include hardware.

ORDER NO.	DESCRIPTION	WT.	STOCK	RETAIL
CF9578	Slippery shoe piece, fits JD cornheads narrow or wide row.	1	49315	\$19.92
CF068	Slippery shoe piece, fits Case-IH cornheads, outside rows.	.5	01211	\$17.28
CF069	Slippery shoe piece, fits Case-IH cornheads, wide center rows.	.5	49315	\$19.92
CF070	Slippery shoe piece, fits Case-IH cornheads, narrow center rows.	.5	58216	\$18.36

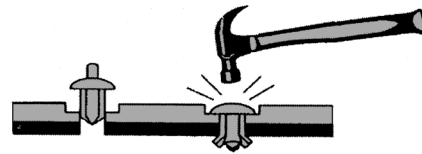
ORDERING INFORMATION:

1. Each slippery shoe part above is priced and sold by the piece.
2. Each slippery shoe part above fits OEM snouts as well as CFC made snouts.



Hardware for Poly Skid Plates

We use hammer rivets in most of our skid plate kits. The shorter rivet is used where the holes are countersunk, long rivets where the hole is not countersunk.



ORDER NO.	DESCRIPTION	WT.	STOCK	RETAIL
KGSM68S5	Pop Rivet, pkg of 50, 3/16" diameter.	2	2733	\$5.32
KGSM68S7	Pop Rivet, pkg of 75, 3/16" diameter.	2	5552	\$7.94
KGSM68S1	Pop Rivet, pkg of 100, 3/16" diameter.	4	3371	\$10.48
KGSM68S15	Pop Rivet, pkg of 150, 3/16" diameter.	5	50110	\$15.79
DRLBT	Drill Bit, #11 high speed. (35/64") for pop rivets.	1	4429	\$3.49
DRLBT9	Drill Bit, L high speed for hammer rivets.	1	0738	\$5.29
KBHAMA	Hammer Rivets, pkg of 50, 9/16" grab, 1/2" head dia.	1	7497	\$13.54
KBHAMAS	Hammer Rivets, pkg of 50, 3/8" grab, 1/2" head dia.	1	7496	\$13.54
KBHAMJD	Hammer Rivets for 600 series JD, 1/4" dia., .32-.43 grip length.	1	0899	\$14.00

Haybine/Mower Conditioner Poly Skid Plate Covers

ORDER NO.	DESCRIPTION	WT.	STOCK	RETAIL
CNH634783	Slippery shoe piece, NH 489, 492, 499 Haybine.	2	81415	\$20.26
CNH479	Slippery shoe piece, NH 479 Haybine.	3	27618	\$23.88
CH453647	Slippery shoe piece, Hesston PT10 Haybine.	2.5	27619	\$23.88
CJD1209	Slippery shoe piece, JD 1209 Mower conditioner.	2.5	02511	\$21.72
CM240	Slippery shoe piece, Vicon 240 disc mower, drive side.	3	60724	\$38.65
CSX089242	Slippery shoe piece, Gehl/Owatonna Haybine.	3	67514	\$22.52
CNH495	Slippery shoe piece, NH 495 Haybine.	2	85914	\$27.97