

Field Cultivator Sweeps - Bolt-on Style

The BEST Sweep Available!

There are two questions you should ask when shopping for sweeps.

- 1. Are they made of Boron Steel?*
- 2. How thick are they?*



Mega Wing Bolt-on Sweeps

- *5/16" (8 mm) thick, high BORON steel.
- *Dimple under bottom bolt hole protects bolt heads.
- *Stay widening design maintains width for life of the sweep.

ORDER NO.	DESCRIPTION	STOCK	RETAIL
MW7B7	Mega Wing Sweep, 5/16" thick, 7" width.	8485	\$11.30
MW8B7	Mega Wing Sweep, 5/16" thick, 8" width.	9196	\$12.25
MW9B7	Mega Wing Sweep, 5/16" thick, 9" width.	0996	\$13.20
MW10B7	Mega Wing Sweep, 5/16" thick, 10" width.	88015	\$14.50

ORDERING INFORMATION: All Mega Wing sweeps are 47 degree with a 1-3/4" bolt hole spacing. Bolt hole size is 7/16". This configuration fits most field cultivators and soil conditioners including John Deere 900 series and later, IH, Case-IH, Sunflower, White, Wilrich, Kewanee, Kent, Landoll, and others.

WCC Series Bolt-on Sweeps

- *BORON steel.
- *Stay widening design maintains width for life of the sweep.
- * 5/16" WCC sweeps are found on page 2.



ORDER NO.	DESCRIPTION	STOCK	RETAIL
WCC4B7	4" Field cultivator sweep, 1/4" thick, 7/16" bolt holes.	9447	\$5.99
WCC6B7	6" Field cultivator sweep, 1/4" thick, 7/16" bolt holes.	7548	\$6.09
WCC7B7	7" Field cultivator sweep, 1/4" thick, 7/16" bolt holes.	4255	\$6.99
WCC8B7	8" Field cultivator sweep, 1/4" thick, 7/16" bolt holes.	4854	\$7.79
WCC9B7	9" Field cultivator sweep, 1/4" thick, 7/16" bolt holes.	9953	\$7.99
WCC10B7	10" Field cultivator sweep, 1/4" thick, 7/16" bolt holes.	5162	\$8.20
WCC12B7	12" Field cultivator sweep, 1/4" thick, 7/16" bolt holes.	1371	\$9.75

ORDERING INFORMATION: All WCC series sweeps are 47 degree with a 1-3/4" bolt hole spacing. Bolt hole size is 7/16". This configuration fits most field cultivators and soil conditioners including John Deere (built 1986 and later), IH, Case-IH, Sunflower, White, Wilrich, Kewanee, Kent, Landoll, M & W, New Holland, and others.

***HEAVY DUTY VERSION OF WCC SWEEPS**

These sweeps are the same design as the WCC sweeps above only 5/16" (7.5 mm) thick. They are very limited quantities of each size available, order early!

ORDER No.	DESCRIPTION	STOCK	RETAIL
WCC7B7HD	7" Field cultivator sweep, 5/16" thick, 7/16" bolt holes.	0965	\$9.20
WCC8B7HD	8" Field cultivator sweep, 5/16" thick, 7/16" bolt holes.	9074	\$9.45
WCC9B7HD	9" Field cultivator sweep, 5/16" thick, 7/16" bolt holes.	9473	\$9.99
WCC10B7HD	10" Field cultivator sweep, 5/16" thick, 7/16" bolt holes.	2772	\$10.29

WFC Series Bolt-on Sweeps

*41 degree sweeps.



ORDER No.	DESCRIPTION	STOCK	RETAIL
WFC6B3	6" Field cultivator sweep, 1/4" thick, 3/8" bolt holes.	7746	\$6.37
WFC7B3	7" Field cultivator sweep, 1/4" thick, 3/8" bolt holes.	4454	\$7.25
WFC9B3	9" Field cultivator sweep, 1/4" thick, 3/8" bolt holes.	0363	\$8.40
WFC9B7	9" Field cultivator sweep, 1/4" thick, 7/16" bolt holes.	8368	\$8.50

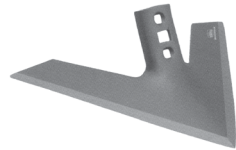
ORDERING INFORMATION: The WFC7B3 & WFC9B3 sweeps are designed for the JD1000 series and JD 722 soilfinishers. WFC9B7 is for early Krause soil finishers.

Sweeps for AC Field Cultivators

Also used on row crop cultivators.

Made of super tough boron steel.

54 degree pitch, 7/16" bolt holes on 2" spacing.



ORDER No.	DESCRIPTION	STOCK	RETAIL
W1406	Row Crop Sweep, 1/4" x 6".	1164	\$8.73
W1407	Row Crop Sweep, 1/4" x 7".	6265	\$8.94
W1408	Row Crop Sweep, 1/4" x 8".	3378	\$10.47
W1409	Row Crop Sweep, 1/4" x 9".	4578	\$10.77
W1410	Row Crop Sweep, 1/4" x 10".	6771	\$11.09
W1412	Row Crop Sweep, 1/4" x 12".	74015	\$14.96
W1414	Row Crop Sweep, 1/4" x 14".	16516	\$22.30
W1416	Row Crop Sweep, 1/4" x 16".	16518	\$22.30
W1418	Row Crop Sweep, 1/4" x 18".	02814	\$26.00
W1420	Row Crop Sweep, 1/4" x 20".	02815	\$26.00
W1422	Row Crop Sweep, 1/4" x 22".	06919	\$28.00
W1424	Row Crop Sweep, 1/4" x 24".	06917	\$28.00

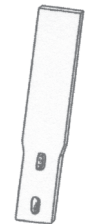
Ordering Info: Half sweeps are also available at a cost of \$1.00 more per sweep, they will be plasma torched from a full sweep.

Hardware for Field Cultivator Sweeps

ORDER No.	DESCRIPTION	STOCK	RETAIL
KIPB38114	Plow bolts with Serr. Flange nuts, pkg of 50, 3/8" x 1 1/4".	49014	\$15.63
KIPB38112	Plow bolts with Serr. Flange nuts, pkg of 50, 3/8" x 1 1/2".	08215	\$18.29
KIPB38134	Plow bolts with Serr. Flange nuts, pkg of 50, 3/8" x 1 3/4".	49615	\$24.20
KIPB716114	Plow bolts with Serr. Flange Nut, pkg of 50, 7/16" x 1 1/4".	65714	\$25.09
KIPB716112	Plow bolts with Serr. Flange Nut, pkg of 50, 7/16" x 1 1/2".	29614	\$24.17
KIPB716134	Plow bolts with Serr. Flange Nut, pkg of 50, 7/16" x 1 3/4".	04811	\$26.29
KIPB7162	Plow bolts with Serr. Flange Nut, pkg of 50, 7/16" x 2".	25332	\$47.89
KIPB716212	Plow bolts with Serr. Flange Nut, pkg of 50, 7/16" x 2 1/2".	03431	\$49.00
KH716WN	Serrated Flange Nut, Pkg of 50, 7/16".	0360	\$9.00
KH716112	7/16" x 1-1/2" hex head bolt. Used to attach noc-on clips. Packed 25/bag.	4056	\$7.20
KH716134	7/16" x 1-3/4" hex head bolt. Used to attach noc-on clips. Packed 25/bag.	3578	\$10.75
KH716LN	7/16" all metal lock nut. Packed 50 per bag.	0364	\$9.00

Shank Protectors

- * Conforms to the shape of cultivator shank
- * 1/4" virgin UHMW poly
- * Eliminates wear on valuable shanks
- * Keeps weeds and trash from piling on shanks
- * Fits all field cultivators



ORDER No.	DESCRIPTION	STOCK	RETAIL
CWP14134P	Shank Protector for field cultivators, White .	5016	\$1.50
CWP14134C	Shank Protector field cultivators, Yellow .	2110	\$1.60
CWP218P	Shank Protector for Chisel plows. 2" wide, 18" long.	1618	\$2.30

Ordering Information: CWP14134P and CWP14134C are boxed and sold in quantities of 100 only.

Harrow Drag Teeth For Field Cultivators



HO1134



KVB01001



SN10161

ORDER NO.	DESCRIPTION	STOCK	RETAIL
HO1134	Headed Spike, 11" x 3/4" square.	4720	\$3.91
KVB01001	V-bolt for HO1134. (50 per pkg)	37419	\$21.04
SN10161	Spike for Sunflower harrows.	0484	\$12.00

Double Points for Field Cultivators

- * WDP series is drop forged from high carbon steel.
- * WDP is 3/8" thick, 2" wide, and 11-3/4" long.
- * T3132 is made from a chromium carbide material and is 3/4" thick.



FT2C



WDP Series

T3132

ORDER NO.	BOLT SIZE	BOLT SPACING	DESCRIPTION	STOCK	RETAIL
CFC22376	7/16"	1-3/4" to 2"	New design! Replaces 2237 & 2276.	6678	\$10.95
WDP2237	7/16"	2"	Double point shovel.	4581	\$12.20
WDP2276	7/16"	1-5/8" - 1-3/4"	Double point shovel.	4581	\$12.20
WDP2238	3/8"	1-5/8" - 1-3/4"	Double point shovel.	4581	\$12.20
WDP223	3/8"	2"	Double point shovel.	4581	\$12.20
WDP2276S	7/16"	1 to 2"	Double point shovel.	4581	\$12.20
T3132	7/16"	1-3/4"	Double point (Chromium-carbide).	01418	\$18.80
FT2C	2" Noc-on spike, .354" (just under 3/8") thick.			8966	\$8.75
FT4FK	4" Noc-on spike, 5/16" thick.			5671	\$10.20

Field Cultivator Sweeps - Noc-on Style

We currently offer three styles of Noc-on sweeps. One style is made to fit the Nichols Tillage clips and others fit the Wiese, Empire, another is the McKay Empire slimwedge style.

Noc-on Sweeps to fit Nichols Brackets

These sweeps will **only fit the Nichols Noc-on Brackets**. Made in the Mega Wing design for longer wear. Made out of **BORON** based steel.



ORDER NO.	DESCRIPTION	STOCK	RETAIL
MWQC7B	7" Mega wing sweep noc-on, 1/4" thick.	4761	\$8.99
MWQC8B	8" Mega wing sweep noc-on, 1/4" thick.	7876	\$10.49
MWQC9B	9" Mega wing sweep noc-on, 1/4" thick.	4283	\$10.99
MWQC10B	10" Mega wing sweep noc-on, 1/4" thick.	9986	\$11.99
QCRS	Quick Change retainer spring for Nichols noc-ons.	070	\$1.00
QCRSHD	Heavy Duty Quick Change retainer spring for Nichols noc-ons.	5019	\$1.50
QC47-7	Noc-on bracket, 47 degree, 7/16" holes, 1-3/4" spacing. Replaces Nichols number Q2747. (Does not work on Sunflower)	3312	\$1.90
VPFTC07	New style clip for Sunflower and DMI.	4225	\$3.20
FT2C	2" Noc-on spike, .354" (just under 3/8") thick.	6566	\$8.75
FT4FK	4" Noc-on spike, 5/16" thick.	1171	\$9.48
KH716112	7/16" x 1-1/2" hex head bolt. Used to attach noc-on clips. Packed 25/bag.	4056	\$7.20
KH716134	7/16" x 1-3/4" hex head bolt. Used to attach noc-on clips. Packed 25/bag.	3578	\$10.75
KH716LN	7/16" all metal lock nut. Packed 50 per bag.	0364	\$9.00

ORDERING INFORMATION: This style of noc-on uses the bracket to determine the pitch of the sweep. All of the sweeps are interchangeable once you have the correct bracket.



QCRSHD

FT2C

Field Test Results



CFC MegaWing

Nichols Ultrawing

Shown to the left are the results of our field test that we ran in the fall of 2004 up in Michigan. The sweep on the left is our MegaWing sweep and the sweep on the right is a Nichols Ultrawing Noc-on. As you can see the MegaWing is definitely out wearing the Ultrawing sweep. This is the result of using Boron steel in our sweeps. Test them for yourself!

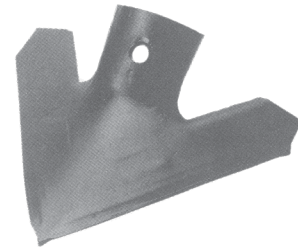
We have the actual sweeps in our office if you would like to stop and see them.

Ultrawing is a registered trademark of Nichols Tillage Tools.

Noc-On Sweeps to Fit Empire and Wiese Brackets



- * 1/4" thick, heat treated steel.
- * Changeover time reduced by 75%.
- * Simply pound secure and go.
- * Will work on McKay-Empire and Wiese brackets.



ORDER NO.	DESCRIPTION	STOCK	RETAIL
M15607K1	Nok-on Sweep, 43 degree, 7", 1/4" thick.	9168	\$8.84
M15609K1	Nok-on Sweep, 43 degree, 9", 1/4" thick.	4764	\$9.63
M15509K1	Nok-on Sweep, 43 degree, 9", 3/16" thick. (*to be discontinued when current inventory is depleted*)	0821	\$4.00
M16204K1	Nok-on Sweep, 47 degree, 4", 1/4" thick.	2945	\$7.03
M16207K1	Nok-on Sweep, 47 degree, 7", 1/4" thick.	7757	\$8.24
M16209K1	Nok-on Sweep, 47 degree, 9", 1/4" thick.	3265	\$8.90
M16210K1	Nok-on Sweep, 47 degree, 10", 1/4" thick.	7966	\$9.96
WFT7	Mounting bracket, 7/16" holes, 1-3/4" - 2" centers. (16107K1)	7912	\$2.81

ORDERING INFORMATION:

Pitch of the sweep is determined by the sweep so make sure you order the correct pitch sweep for your application.

Slim Wedge® Nok-on Sweeps

McKay Empire now offers their very successful Nok-on sweep system. They will fit both field cultivators and 2 hole danish units. Very effective time saving system, just knock them on and go.



ORDER NO.	DESCRIPTION	SW142	SW144	STOCK	RETAIL
SW47	SW bracket, 2 hole, 7/16" punch, 1-1/2" c.c. (SWVIB-112) Used on 2 hole Danish units (Kongskilde).			6437	\$4.94
SW47-134L	SW bracket, 7 hole, 7/16" punch, 1-3/4" c.c. for use on field cultivators.			9571	\$10.84
SW142	Slim wedge sweep, 2" wide x 1/4" thick.			7956	\$8.53
SW143	Slim wedge sweep, 3" wide x 1/4" thick.			0165	\$8.71
SW144	Slim wedge sweep, 4" wide x 1/4" thick.			1164	\$8.73
SW147	Slim wedge sweep, 7" wide x 1/4" thick.			1083	\$11.44
SW149	Slim wedge sweep, 9" wide x 1/4" thick.			1182	\$11.59
SWR2	Retainer clip used with SW47-134L.			3515	\$2.19

Hardfacing for Sweeps

Hardface applied to the cutting edge - bottom side of rowcrop, field cultivator, or danish tine sweeps. Gives approximately twice the wear life in rock-free soil conditions. **Add to sweep price.**



ORDER NO.	DESCRIPTION	STOCK	RETAIL	ORDER NO.	DESCRIPTION	STOCK	RETAIL
C1HS	Sweep Hardfacing, 1".	0235	\$4.00	C12HS	Sweep Hardfacing, 12".	0671	\$9.50
C2HS	Sweep Hardfacing, 2".	0040	\$5.00	C14HS	Sweep Hardfacing, 14".	0084	\$10.00
C4HS	Sweep Hardfacing, 4".	0445	\$5.50	C16HS	Sweep Hardfacing, 16".	0698	\$12.00
C6HS	Sweep Hardfacing, 6".	0848	\$6.00	C18HS	Sweep Hardfacing, 18".	02113	\$14.00
C7HS	Sweep Hardfacing, 7".	0256	\$6.50	C20HS	Sweep Hardfacing, 20".	08215	\$16.00
C8HS	Sweep Hardfacing, 8".	0656	\$7.00	C22HS	Sweep Hardfacing, 22".	04415	\$18.00
C9HS	Sweep Hardfacing, 9".	0065	\$7.50	C24HS	Sweep Hardfacing, 24".	00615	\$20.00
C10HS	Sweep Hardfacing, 10".	0861	\$8.50				

Field Cultivator Application Chart

The following information is for reference purposes only. It is your responsibility to verify all of the information prior to ordering.

OEM	BOLT SIZE	BOLT SPACING	SWEEP PITCH	SWEEP SERIES
Allis Chalmers	7/16	2"	54 deg.	Row Crop
Brady	3/8	1-3/4"	41 deg.	WFC
Bush Hog	3/8	1-3/4"	47 deg.	WCC/MW
Case	3/8	1-3/4"	47 deg.	WCC/MW
Case-IH	7/16	1-3/4"	47 deg.	WCC/MW
DMI	7/16	1-3/4"	47 deg.	WCC/MW
Ford 208	3/8	1-3/4"	47 deg.	WCC/MW
Forrest City	7/16	2"	54 deg.	Row Crop
Glencoe	3/8	1-3/4"	47 deg.	WCC/MW
Hesston	7/16	1-3/4"	47 deg.	WCC/MW
Hiniker	7/16	1-3/4"	47 deg.	WCC/MW
JD1000 Series	3/8	1-3/4"	41 deg.	WFC
JD 900 Series	7/16	1-3/4"	47 deg.	WCC/MW
Kent	7/16	1-3/4"	47 deg.	WCC/MW
Kewanee	3/8	1-3/4"	47 deg.	WCC/MW
Krause	3/8	1-3/4"	47 deg.	WCC/MW
Krause "K" tine (old)	7/16"	1-3/4"	41 deg.	WFC
Krause "K" tine (most)	7/16"	1-3/4"	47 deg.	WCC/MW
Landoll	7/16	1-3/4"	47 deg.	WCC/MW
Sunflower	7/16	1-3/4"	47 deg.	WCC/MW
Wil-Rich	7/16	1-3/4"	47 deg.	WCC/MW
White	3/8	1-3/4"	47 deg.	WCC/MW